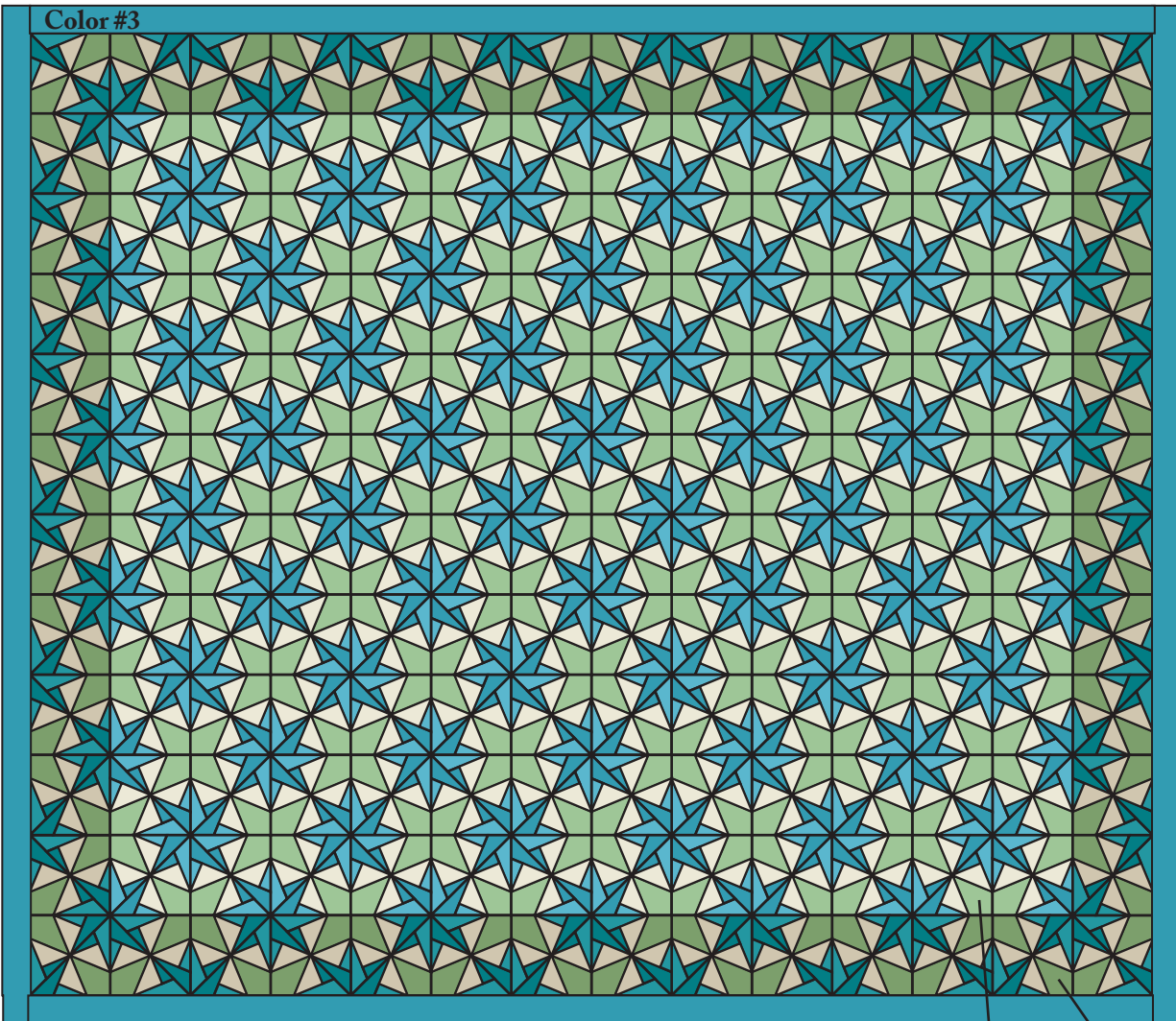


Blustery Day King Quilt

© Judy Martin 2008



Block Border Block

Quilt Size: 108" x 125"

Set 12 x 14 blocks

Block Size: 8½" finished

(9" from raw edge to raw edge)

Requires:

120 Blocks

48 Border Blocks

See the color key on the quilt instructions page. Cut the following patches, referring to separate cutting and point trimming directions.

2 yards Teal #1

Cut 96 A and 96 B

2 yards Teal #2

Cut 96 A and 96 B

6 yards Teal #3

Cut 2 border strips 3½" x 108½"

and 2 border strips 3½" x 119½"

Also cut 240 A and 240 B

4¾ yards Teal #4

Cut 240 A and 240 B

1½ yards Green #5

Cut 96 D

3¾ yards Green #6

Cut 240 D

1½ yards Beige #7

Cut 192 C

3¾ yards Beige #8

Cut 480 C

11¾ yards backing

Cut 3 panels 39" x 133"

1 yard binding fabric

Cut 15 strips 2" x 36"